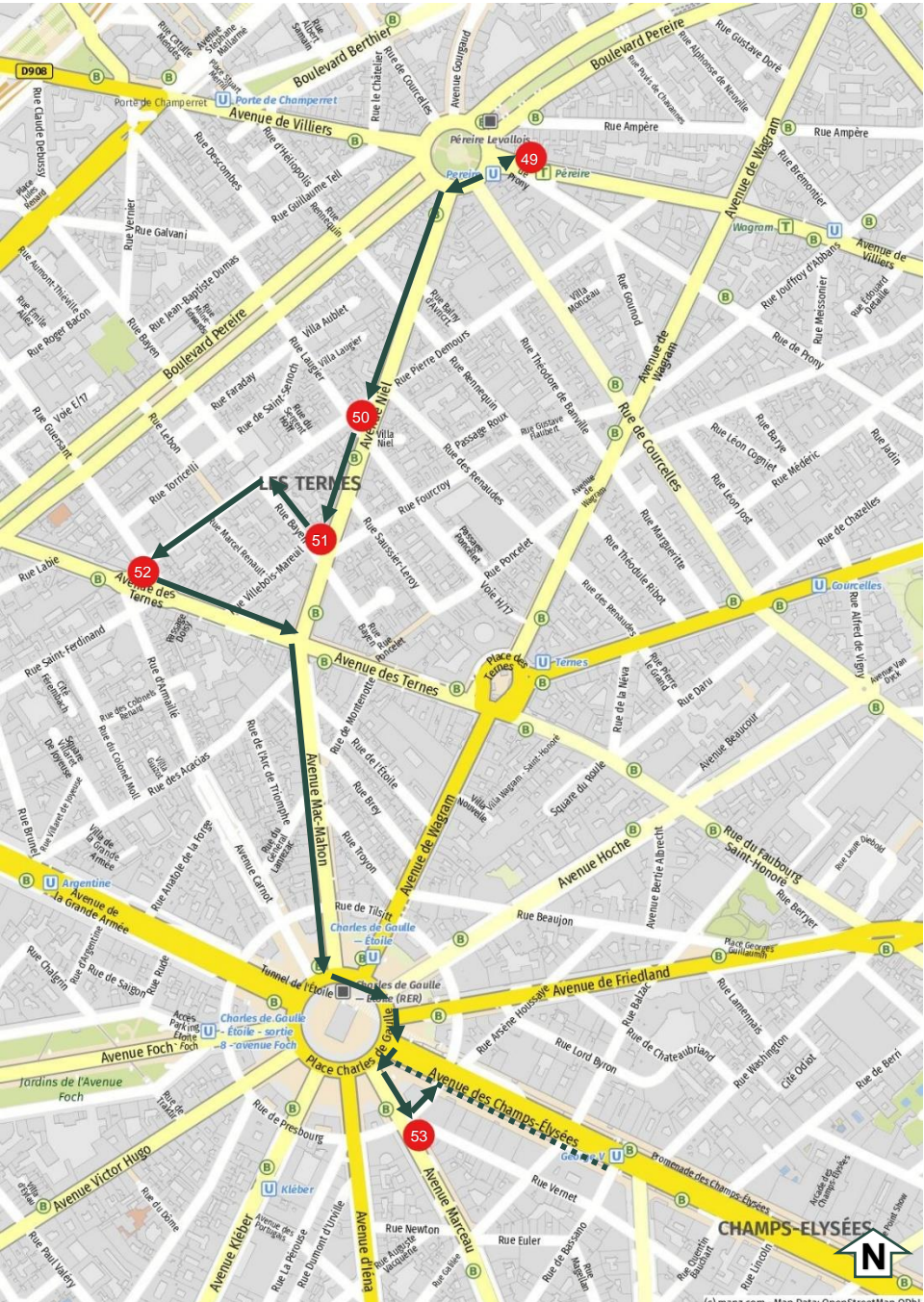



# WALK 10 | Arc de Triomphe

Start – Metro Station, Pereire, Line 3

Approximate Length: 2.5 km



 = Underground Metro Station

..... = Options

After exiting the Metro station, proceed to Avenue de Villiers and there you will find the first fountain of this walk.

**Fountain**   
**112 Avenue de Villiers, 17<sup>th</sup> Arr.**



This fountain is likely one of the first commissioned by Sir Wallace and is still standing at its original location. **Place du Maréchal Juin** is a huge intersection with a very large traffic circle in the center. The circle also functions as a public garden, with rose bushes, grass, trees, walkways and park benches. It is a pleasant oasis if visitors can ignore the crazy Paris traffic circulating around it. The fountain stands on Avenue de Villiers, across the road from the circle.

From Place du Maréchal Juin take Avenue Niel to Place Aimée Maillart. At the intersection of Rues Pierre Demours and Laugier is the next fountain.

**Fountain** <sup>50</sup>  
**Place Aimée Maillart, 17<sup>th</sup> Arr.**



Because the base of the fountain is at ground level with its concrete pedestal under the surface, it appears shorter and wider than the others, perhaps an optical illusion. The paved public place

where the fountain stands also has a large modern newsstand, public toilet facility and a Morris column. This area has elegant, well-kept buildings from the late 19<sup>th</sup> and early 20<sup>th</sup> century.



Continue walking along Avenue Niel and just before you arrive at Rue Bayen, you will discover another Wallace Fountain near the post office.

**Fountain** <sup>51</sup>  
**13 Avenue Niel, 17<sup>th</sup> Arr.**

This fountain stands on a street corner in front of a post office in a lively and bustling part of the district with upscale clothing boutiques and large electronics stores.



There are lots of cafes and restaurants in this commercial area. There are no foundry markings on this fountain, which could suggest it has been repaired with parts from other fountains. It has stood at this location since before 1893, making it one of the earliest.

Now, turn right on to Rue Bayen and walk one block to Rue Pierre Demours. Turn left onto Rue Pierre Demours and follow it to Place Tristan Bernard. There you will find a Wallace Fountain on Avenue des Ternes.



On the other side of the square is the interesting church **St. Ferdinand des Ternes**, with a flat façade and two rows of arches on the top, some of which contain exposed church bells.

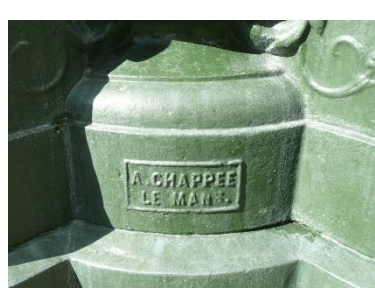
## Fountain 52

Place Tristan Bernard, Avenue des Ternes, 17<sup>th</sup> Arr.

This colonnade style Wallace Fountain is one of only two still existing in Paris. Smaller in size and less intricate than the caryatid model, these fountains were less expensive



to manufacture and install, but they were not as popular or as lasting as the grand model. The foundry marking, A. Chappee Le Mans, on this fountain indicates it probably was cast earlier



than the only other colonnade fountain located in the 16<sup>th</sup> Arr., which bears the mark, Chappee & Fils Le Mans.

Now, take Avenue des Ternes to Avenue Mac Mahon. Turn right and follow it to the **Arc de Triomphe de l'Étoile**, the grand monument to Napoleon's war triumph.



The arch was commissioned by Emperor Napoleon in 1806 after the victory at Austerlitz when he was at the peak of his fortunes. Today, it is a national symbol and memorial honoring all those who fought and died for France. At its base is the **Tomb of the Unknown Soldier** who perished in WWI. Visit the monument and climb to the top if you wish a spectacular view of Paris.

View from the top of Arc de Triomphe



Then, circle **Place Charles De Gaulle** to Avenue Marceau. Proceed south on Avenue Marceau and after a short distance you will find the last fountain of this walk.

## Fountain 53

82 Avenue Marceau, 8<sup>th</sup> Arr.



This fountain sits on a tiny patch of pavement with curbing all around providing parking space for motorcycles. It is less than a block away from the Arc de Triomphe de l'Étoile. The broad

Avenue Marceau on which it stands is a madhouse of Paris traffic.

To end the walk, make your way to Avenue des Champs Elysées, turn left to the Metro station at Charles de Gaulle-Etoile or right to the one at the intersection of Avenue George V.

**End** – Metro Stations,  
George V, Line 1  
Charles de Gaulle-Etoile, Lines 1,  
2, 6 and RER A

**Option:** Take as stroll down Avenue des Champs Elysées. There are several Metro stations along the avenue, as well as one at the corner of Concorde Square.

---

Post a comment about **Walk 10** and share a discovery or selfie on your social media.

**Take the Challenge** to find all the fountains and automatically become a Friend of the Fountains. Document the time and date you found each fountain on the **Chart** available to download from the website.

In addition to dispensing water, these fountains continue to remind humans to be kind and generous to one another and to cooperate with others for the common good. That is what Sir Richard Wallace intended, and that is what we should do to thank him.