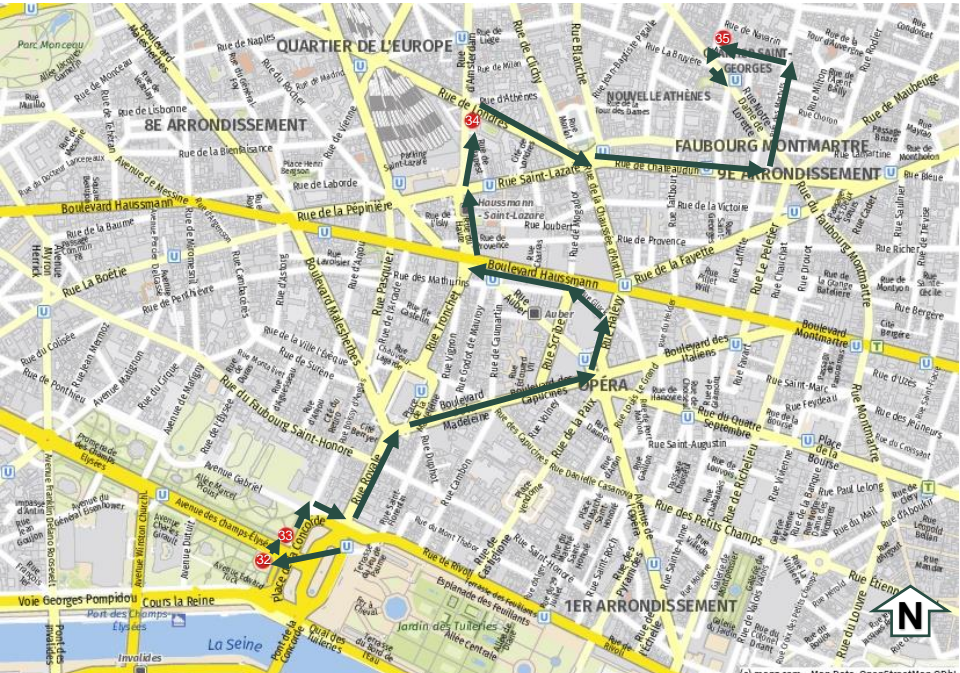


WALK 7 | Concorde-Opera

Start – Metro Station, Concorde, Lines 1,8,12

Approximate Length: 4.5 km



 = Underground Metro Station

After exiting the Metro station, take in the impressive **Place de la Concorde** with its famous obelisk and two glorious fountains. Then, cross the square to the left side of the **Avenue des Champs-Élysées**. Here you will find a Wallace Fountain.



Fountain 32
**Avenue des Champs-Élysées,
Chevaux de Marly 8th Arr.**



On the southwest side of the avenue Champs-Élysées, where it begins at Concorde Square, a Wallace Fountain stands near one of the **Marly horse monuments**.

This fountain gets lots of use from thirsty walkers who have made their way down the 1.2-mile avenue from the Arc de Triomphe or have walked from the Louvre through the splendid Tuileries. The fountain has Val d'Osne foundry markings and has been at this location since before 1893.

Cross the most famous avenue in the world and very near the other Marly horse monument you will find another Wallace Fountain.

Fountain 33

**Avenue des Champs-Élysées,
Chevaux de Marly 8th Arr.**

There are no foundry markings on this fountain, which means it has acquired replacement parts over the years, perhaps from other early fountains.

Nevertheless, it also has stood at this

location since before 1893.



Next, return to Concorde Square and go left to Rue Royale. Walk along Rue Royale past the ultra-expensive retail stores and the legendary **Maxim's** restaurant to Place de la Madeleine.

The **La Madeleine** church was designed as a temple to the glory of Napoleon's army. After the fall of Napoleon, King Louis XVIII determined the structure should be used as a church dedicated to Mary Magdalene. Today, it functions as an operating Catholic church and the interior holds many works of art, including a fresco over the altar that attests to Napoleon Bonaparte's ego, as he is prominently placed in the painting. Chopin's funeral service was held at La Madeleine. Look inside if you have an interest.

Take Boulevard de la Madeleine east. It will become Boulevard des Capucines. Follow it to Place de l'Opéra. Circle the historic and magnificent **Garnier Opera House** to take in its grandeur from the outside.

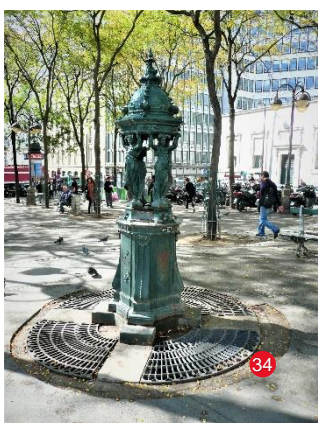
Garnier Opera House



Then, at the rear of the structure, turn left onto Boulevard Haussmann and proceed west. Pass by the **Printemps** department store and turn right onto Rue de Havre, following it to **Gare Saint-Lazare**. Facing north and the front of the train station, stay to the east or right of the station and walk on Rue d'Amsterdam to Place de Budapest. There you will find a Wallace Fountain.

Fountain 34

Place de Budapest, 9th Arr.



To arrive at this fountain, you will walk by the massive Printemps department store and along streets where stores are filled with fashionable and trendy clothes, shoes and

accessories. To get to this fountain, you also pass around Gare Saint-Lazare, a train station

servicing Paris and operated by SCNF, France's national railroad company. Place de Budapest is a rectangular public square paved with asphalt and serving primarily as a parking lot for motorcycles.

Next, take a right on Rue de Londres at the back of the square and follow it a few short blocks to Place d'Estienne d'Orves where you will see **Sainte-Trinité** church.



La Trinité, as it is known, is a church building of the Second Empire period. It was built between 1861 and 1867 at a cost of almost 5 million francs. La Trinité was constructed as part of the beautification and reorganization of Paris under the direction of Baron Haussmann.

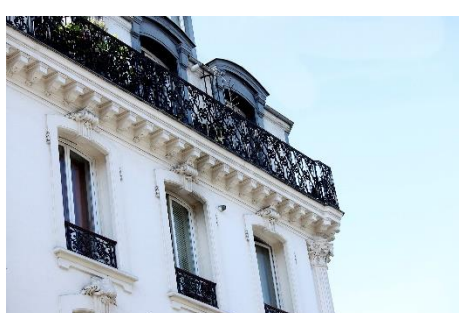
Exterior figures of Faith, Hope, and Charity were sculpted by Eugène-Louis Lequesne, and the church has a bell tower 63 meters high topped with a dome. The choir is ten steps higher than the nave and is surrounded by an ambulatory. The church is known internationally for its former organist, the French composer Olivier Messiaen. Here at La Trinité the funerals of Hector Berlioz and Georges Bizet were held.

After leaving the church, go left and take Rue de Châteaudun to the church **Notre Dame de Lorette**. Construction of this church was completed in 1836 and influenced by the neoclassical styles of the time. Most unusual are the frescos, murals painted directly on the side walls above the nave next to the windows.

Inside the church are statues by notable sculptors. Musician Georges Bizet and painter Claude Monet were baptized in this church.

France's motto *Liberté, Égalité, Fraternité* was added above the church's main entrance in 1902.

Take a side street to the back of the church and go north, proceeding on Rue des Martyrs. At the first street going left, turn onto Rue Clauzel. Follow it a short way to Place Gustave Toudouze where you will find the last Wallace Fountain of this walk.



Fountain 35 **Place Gustave Toudouze, 9th Arr.**



This odd shaped public place also has a traditional newsstand and a Morris column. Several small cafes and restaurants dominate the square. It is rare to find tourists in

this area of residential buildings and very quiet streets.

Now, go left on Rue H. Monnier. Then, turn left and wander down Rue Notre Dame de Lorette to Place St-Georges where you will find the Metro station.

End – Metro Station, St-Georges, Line 12

Post a comment about **Walk 7** and share a discovery or selfie on your social media.

Take the Challenge to find all the fountains and automatically become a Friend of the Fountains. Document the time and date you found each fountain on the **Chart** available to download from the website.

In addition to dispensing water, these fountains continue to remind humans to be kind and generous to one another and to cooperate with others for the common good. That is what Sir Richard Wallace intended, and that is what we should do to thank him.